



# 02 Construction machine and vehicle

How to call tools From the SCP launcher → Click the "Construction Machine / Vehicle" icon

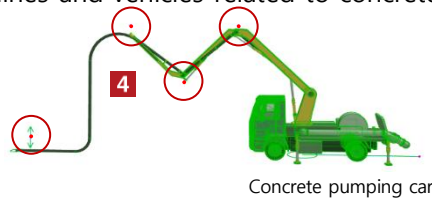
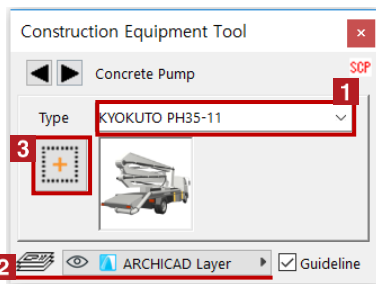


Select the Construction Machine / Vehicle icon

## How to use

After setting each item, click any position on the screen to place the construction machine / vehicle

### 【 Placement of construction machines and vehicles related to concrete placing 】



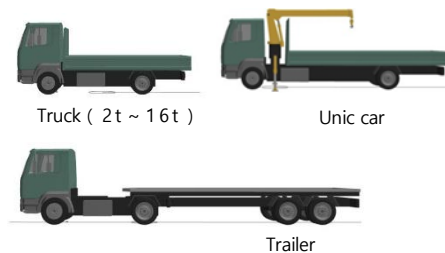
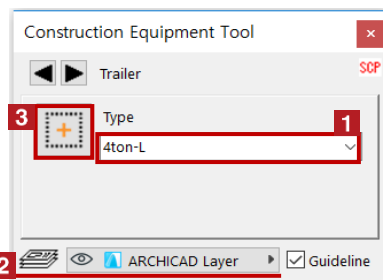
Concrete pumping car



Ready-mixed concrete car

- 1 Select type of construction machine / vehicle
- 2 Select the layer to place
- 3 By clicking, place the construction machine / vehicle in an arbitrary position
- 4 The arm angle and hose position can be edited with Hotspot

### 【 Placement of vehicles related to transport machinery 】



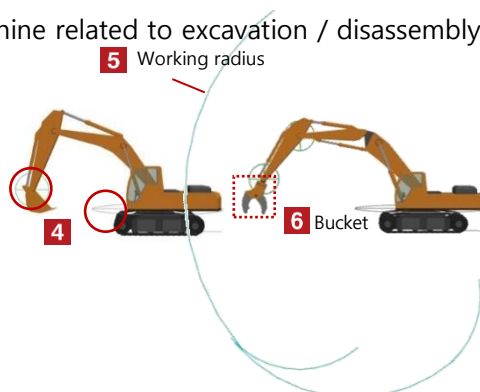
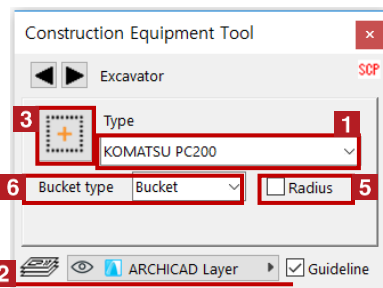
Truck ( 2t ~ 16t )

Unicom car

Trailer

- 1 Select vehicle type
- 2 Select the layer to place
- 3 By clicking, place the vehicle in an arbitrary position

### 【 Placement of construction machine related to excavation / disassembly 】



5 Working radius

4

6 Bucket

- 1 Select type of construction machine / vehicle
- 2 Select the layer to place
- 3 By clicking, place the construction machine / vehicle in an arbitrary position
- 4 The arm and turning angle can be edited with Hotspot

< Other dialog box >

- 5 Show / hide working radius
- 6 Selection of bucket type

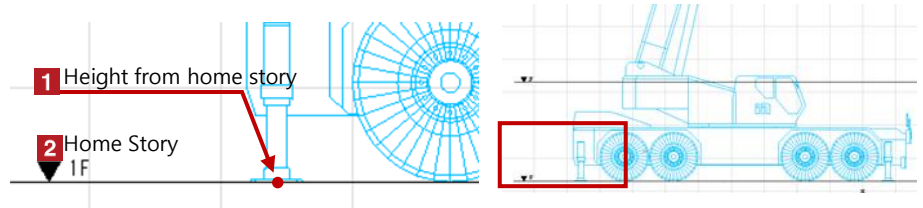
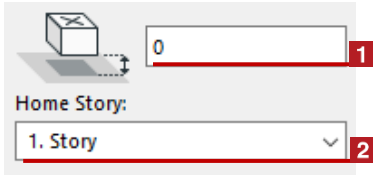
※Hotspot, which is editing the bucket angle, is displayed when you [None] [Automatic bucket angle] from "Object setting screen (Ctrl + T)" after the construction machine is placed

# 02 Construction machine / vehicle



## Installation reference

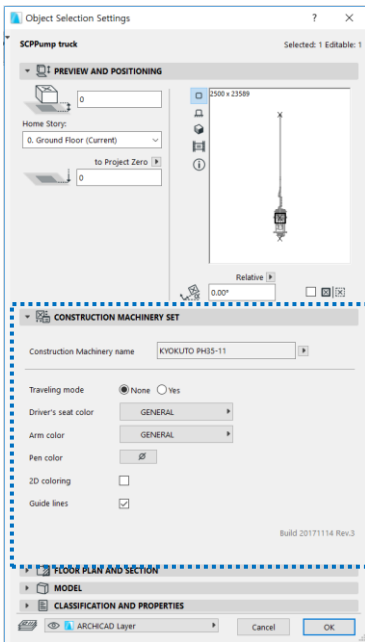
The installation reference height of the construction machine / vehicle is the bottom of the outrigger



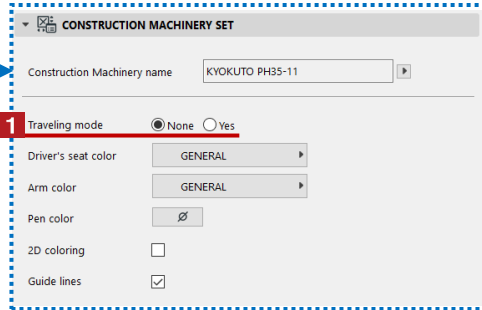
## Object settings

Select the construction machine / vehicle and change various settings with "Object setting (Ctrl + T)"

### 【 Setting for each construction machine 】

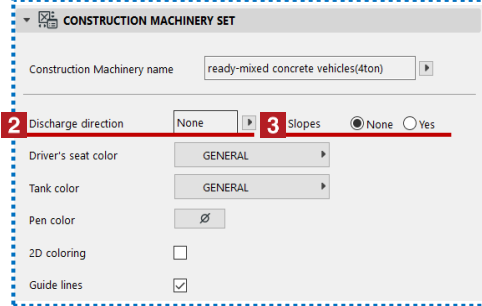


#### Concrete pumping car

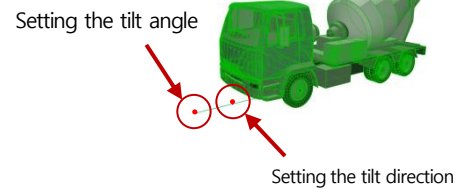


- 1 Arm folding  
[Yes] Checked, Arm will be folded

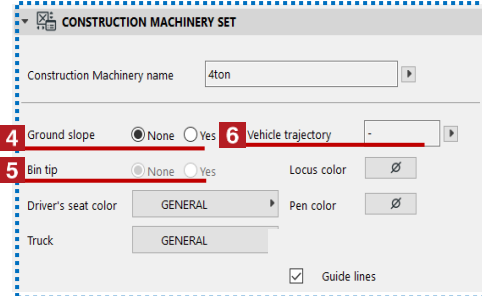
#### Ready-mixed concrete vehicles



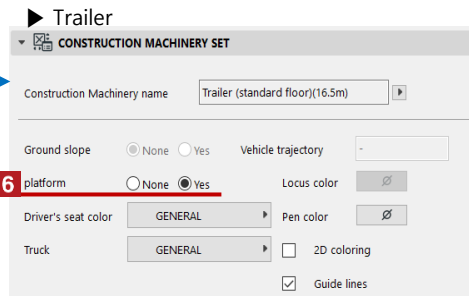
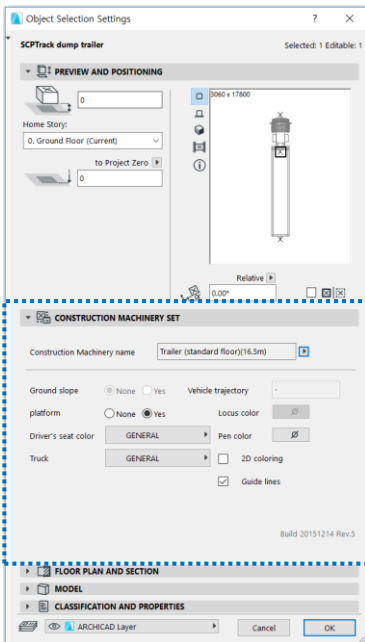
- 2 Setting the discharge direction of the chute
- 3 Slope setting  
[Yes] Hotspot, which is displayed in front of the vehicle, allows you to set the tilt angle and tilt direction (3D display only)



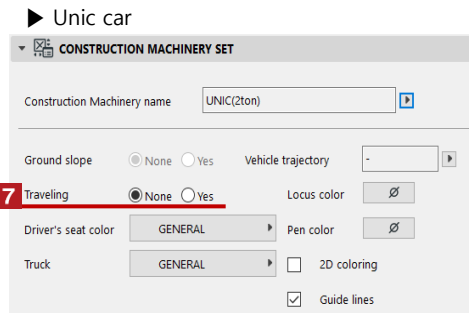
#### Dump truck



- 4 Setting Ground slope
- 5 Up and down of the platform (dump only)
- 6 Switching display or non-display of the vehicle trajectory

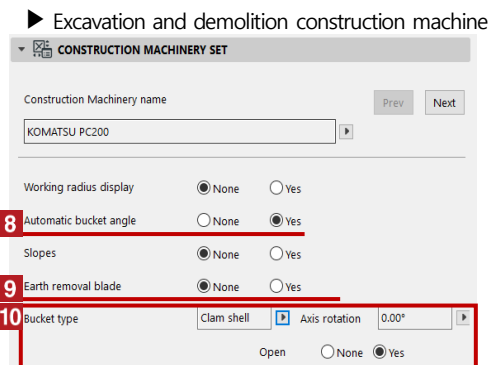
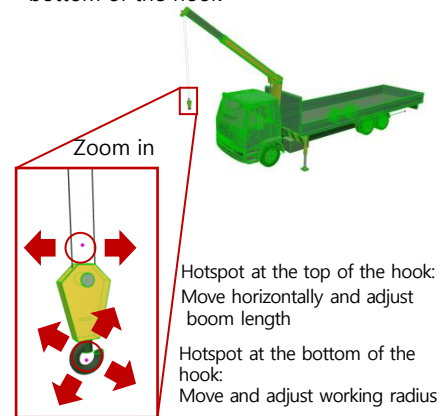


**6** Show / hide the loading platform



**7** Folding Boom · Outrigger  
[Yes] Checked, Boom and outrigger are folded

< Adjust boom length and work radius >  
Adjust with Hotspot at the top and bottom of the hook



**8** Adjust bucket angle  
[None] Checked, it can be set to any angle with the Hotspot displayed at the tip of the bucket

**9** Switching display / non-display of the discharging blade.

**10** Detailed setting when the bucket type is Nibra / club shell.